

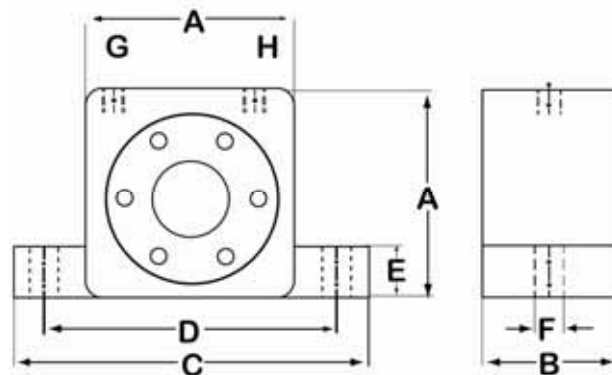
**PERFORMANCE DATA**

Model	Part N <sup>o</sup>	Frequency (VPM)			Force						Air Consumption/Min					
		29 PSI	58 PSI	87 PSI	LB	N	LB	N	LB	N	CF	L	CF	L	CF	L
VGT-4	12-20400	14,000	15,000	15,000	30.35	135	40.47	180	44.97	200	1.16	33	2.04	58	2.93	83
VGT-6	12-20600	11,500	12,500	12,500	29.22	130	39.34	175	47.20	210	1.16	33	2.04	58	2.93	86
VGT-8	12-20800	36,000	42,000	46,000	223	990	464	2060	655	2910	1.6	46	2.8	80	3.9	112
VGT-10	12-21000	27,500	35,000	37,500	189	840	313	1390	540	2400	1.6	46	2.8	80	3.9	112
VGT-10S	12-21100	17,000	23,000	25,000	146	540	304	1350	439	1950	1.6	46	2.8	80	3.9	112
VGT-13	12-21300	26,000	30,000	33,000	315	1400	549	2440	839	3730	4.2	120	7.0	200	10.2	290
VGT-16	12-21600	17,000	21,500	24,000	275	1220	470	2090	711	3160	4.2	120	7.0	200	10.2	290
VGT-20	12-22000	17,000	20,000	23,000	488	2170	909	4040	1240	5520	6.5	185	11.4	325	15.9	455
VGT-25	12-22500	12,000	15,500	17,000	477	2120	790	3510	1140	5070	6.5	185	11.4	325	15.9	455
VGT-30	12-23000	13,000	14,000	16,000	760	3380	1221	5430	1696	7540	11.5	330	18.5	530	26.0	745
VGT-36	12-23600	8,000	10,000	13,000	740	3290	1205	5360	1617	7190	11.5	330	18.5	530	26.0	745
VGT-36S	12-23700	6,100	7,200	8,300	922	4100	1394	6200	1687	7500	11.65	330	18.72	530	26.31	745
VGT-40	12-24000	7,700	8,800	9,500	968	4300	1641	7300	2203	9800	15.0	425	24.6	700	34.2	970
VGT-48	12-24800	6,000	7,500	9,700	1101	4900	1731	7700	2360	10500	15.0	425	24.6	700	34.2	970
VGT-48S	12-24900	1,800	5,600	6,300	0	0	1686	7500	2698	12000	15.0	425	24.6	700	34.2	970



**DIMENSIONS**

Model	Part N <sup>o</sup>	A		B		C		D		E		F		G/H	Weight	
		inch	mm	inch	mm	inch	mm	inch	mm	inch	mm	inch	mm	Thread BSP	Lbs	Kg
VGT-4	12-20400	1.57	40.0	1.10	28.0	2.75	70.0	2.2	56.0	0.41	10.5	0.23	6.0	1/8"	0.36	0.165
VGT-6	12-20600	1.57	40.0	1.10	28.0	2.75	70.0	2.2	56.0	0.41	10.5	0.23	6.10	1/8"	0.30	0.14
VGT-8	12-20800	1.97	50	1.30	33	3.38	86	2.68	68	0.47	12	0.27	7	1/8"	0.55	0.250
VGT-10	12-21000	1.97	50	1.30	33	3.38	86	2.68	68	0.47	12	0.27	7	1/8"	0.56	0.255
VGT-10S	12-21100	1.97	50	1.30	33	3.38	86	2.68	68	0.47	12	0.27	7	1/8"	0.58	0.263
VGT-13	12-21300	2.56	65	1.65	42	4.45	113	3.54	90	0.63	16	0.35	9	1/4"	1.24	0.565
VGT-16	12-21600	2.56	65	1.65	42	4.45	113	3.54	90	0.63	16	0.35	9	1/4"	1.28	0.580
VGT-20	12-22000	3.15	80	2.20	56	5.04	128	4.09	104	0.63	16	0.35	9	1/4"	2.40	1.090
VGT-25	12-22500	3.15	80	2.20	56	5.04	128	4.09	104	0.63	16	0.35	9	1/4"	2.46	1.120
VGT-30	12-23000	3.94	100	2.87	73	6.30	160	5.12	130	0.79	20	0.43	11	3/8"	4.85	2.20
VGT-36	12-23600	3.94	100	2.87	73	6.30	160	5.12	130	0.79	20	0.43	11	3/8"	5.10	2.30
VGT-36S	12-23700	3.94	100	2.87	73	6.30	160	5.12	130	0.79	20	0.43	11	3/8"	5.57	2.53
VGT-40	12-24000	4.72	120	3.26	83	7.64	194	5.99	152	0.94	24	0.67	17	3/8"	8.13	3.69
VGT-48	12-24800	4.72	120	3.26	83	7.64	194	5.99	152	0.94	24	0.67	17	3/8"	8.57	3.89
VGT-48S	12-24900	4.72	120	3.26	83	7.64	194	5.99	152	0.94	24	0.67	17	3/8"	9.45	4.29



Distributed By:

  
**ChicagoVibratorProducts**  
Flow and Compaction

Division of CVP Group

800-842-7284 (P)

866-247-7538 (F)

Solutions@ChiVib.com

www.ChicagoVibrator.com