

HPD

Hydraulic Post Driver



Pneumatic • Hydraulic • Gasoline
Professional Grade Tools



The Rhino® HPD 60 is a high-performance hydraulic post driver perfect for fencing, road signs, farm, ranch, forestry, vineyards, guardrail, anchors, tent stakes - essentially any heavy duty driving job.

Efficient driving power -

Compact and lightweight with performance equal to much larger, bulkier pounders.

Durable and low maintenance -

Quality craftsmanship, innovative design, fewer wear parts, and continuous lubrication in an enclosed system make our hydraulic tools practically maintenance-free. One piece shuttle valve, and a nitrogen accumulator that lasts 7-times longer than a typical tool.

Increased operator safety and comfort -

Vibration dampening, ergonomic design, and built-in handle for lift-assist if required.

Adaptable to multiple conditions -

Closed system can be used in wet conditions. Hydraulics will not freeze up in below-zero temperatures.

Multiple power source options-

Can be used with Rhino Hydraulic Power Packs, or with other power sources, such as tractors, work trucks, excavators and skid steers. Use of a Rhino HFD or other Oil Flow Divider is recommended to protect against overload from larger power sources.

Cost effective-

No compressor costs. Post Driver/Power Pack can be hauled easily and access difficult job sites. Tool efficiency reduces fuel consumption.

Versatile-

Adapters and drive caps from the Rhino PD-55 post driver, can also be used with the HPD-60 to fit ground rod, channel, square and round posts. The Chuck-Lok Adapter system from the Rhino Gas Post Drivers is also available for 2 3/8" & smaller post driving.



Easily accessible, quick release trigger, flat face quick couplings and vibration dampening, light-weight performance expedite post driving.



Use the optional remote valve (801011) with the HPD 60 for driving tall posts.



HPD 60 Specifications

Weight	64 lbs (29 kg)
Weight including adaptor and hoses	68,5 lbs (31 kg)
Oil Flow	8 g.p.m. (30 l.p.m.)
Working Pressure	1725 psi (120 Bar)
Max. setting pressure relief valve	2300 psi (160 Bar)
Max. return pressure	220 psi (15 Bar)
Blow frequency	1380 (1/min.)
Blow energy	95 (Joule)
Max. oil temperature	158° F (70° C)
Accumulator Charging Pressure	730 psi (50 Bar)
Cooling capacity needed	3 kW
Accumulator Charging Pressure	730 psi (50 Bar)
Cooling capacity needed	3 kW
Accumulator Charging Pressure	730 psi (50 Bar)
Chuck Size	Varies by post O.D.
<u>Largest chuck possible</u>	
Round	Max. 3 ¾" (Ø 95 mm)
Square	Max. 2 ⅝" x 2 ⅝" (67 x 67 mm)
Hexagon	Max. 3 ¼" (82 mm)

HPD 60 Standard Equipment

801010	HPD 60 Hydraulic Post Driver
	3 7/8" (98.4 mm) I.D. Master Chuck
	One set of 12" x 1/2 Hydraulic Whip Hoses
	Flat Face Quick Connect Couplings
	Trigger Valve

Applications

Post Types

- T-Post
- Ground Rod
- Tent Stakes
- Schedule 40 Pipe up to 3 7/8" diameter
- Channel Posts up to 3-4 lbs/ft
- Square Posts



PORTABLE POWER & PRODUCTIVITY

The HPD 60 can be powered with the HPP 14 Flex™ or HPP 18V Flex™ Power Packs or with other hydraulic power sources. Use of a RHINO HFD or other Oil Flow Divider is recommended.



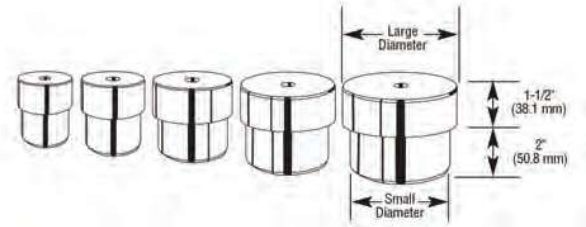
HPD 60 Parts and Accessories

PLEASE NOTE			
801016	HPD Master Chuck is required with the following chuck adapters		
070609	3 1/2"	(88.9 mm)	Chuck Adapter
070610	3"	(76.2 mm)	Chuck Adapter
070611	2 1/2"	(63.5 mm)	Chuck Adapter
070612	2"	(50.8 mm)	Chuck Adapter
070613	1 1/2"	(38.1 mm)	Chuck Adapter
070614	1"	(25.4 mm)	Chuck Adapter
070617	1-1 1/2 lbs/ft	Channel Post	Chuck Adapter
070618	2-2 3/4 lbs/ft	Channel Post	Chuck Adapter
070619	3-4 lbs/ft	Channel Post	Chuck Adapter
070615	2"	(50.8 mm)	Heavy Chuck Adapter



Insert the T-Bar into the hole in the drive cap to remove if stuck in the pipe after driving.

Drive caps are for Schedule 40 Pipe. Please call Rhino to order drive cap for Schedule 80 pipe.



The small outer diameter (O.D.) of the round drive cap should fit within the I.D. of your round post.

HPD 60 Round Drive Caps

Height (mm) Large Diameter(mm) Small Diameter(mm)

PLEASE NOTE

Drive Caps are necessary to minimize damage to posts being driven.

071260	2"	Drive Cap for Schedule 40 Pipe w/T-Bar and Clip	3.5" (88.9)	2.375" (60.325)	2.04" (50.84)
071261	2 1/2"	Drive Cap for Schedule 40 Pipe w/T-Bar and Clip	3.5" (88.9)	2.875" (73.025)	2.45" (176.4)
071262	3"	Drive Cap for Schedule 40 Pipe w/T-Bar and Clip	3.5" (88.9)	3.5" (88.9)	3.05" (77.47)

HPD 60 Parts and Accessories for Break-Away Anchor Posts

PLEASE NOTE		
801016	HPD Master Chuck is also required with the following Break-Away Systems and will also require a chuck adapter and a drive cap	
070832	Chuck Adapter for the Channel Post Break-Away Anchor System	
070836	Drive Cap for the Channel Post Break-Away Anchor System	
071014	Chuck Adapter for the Square Tube Break-Away Anchor System	
071004	1 1/4"	Drive Cap for the Square Tube Break-Away Anchor System
071005	1 1/2"	Drive Cap for the Square Tube Break-Away Anchor System
071006	1 3/4"	Drive Cap for the Square Tube Break-Away Anchor System
071007	2"	Drive Cap for the Square Tube Break-Away Anchor System
071008	2 1/4"	Drive Cap for the Square Tube Break-Away Anchor System
071009	2 1/2"	Drive Cap for the Square Tube Break-Away Anchor System
Custom	4 1/4"	Round Master Chuck
Custom	4 1/16" x 4 1/16"	Square Master Chuck

Anchor Drive Caps are sold by the outside dimension of the anchor.

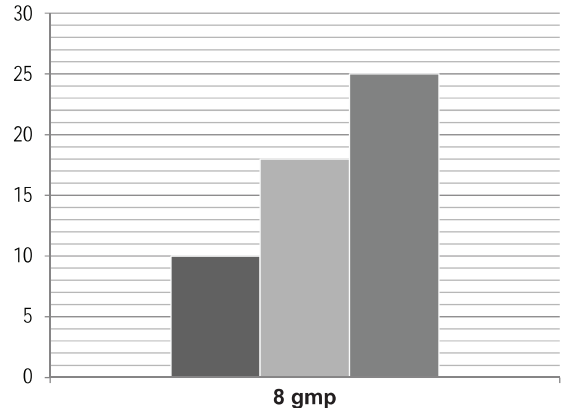
HPD 60 Optional Accessories

801005	HFD Oil Flow Divider*
801226	Extension Hose (20")
801227	Extension Hose (30")
801230	HPP 14 Flex Power Pack
801214	HPP 18V Flex Power Pack
801011	Remote Valve with 6" Whip Hose and 6' Hose

HPD-60™ Performance Chart

Maximum length of different size hoses.

■ 3/8" hose diameter ■ 1/2" hose diameter ■ 5/8" hose diameter



Pressure from Power Pack: 2175 psi (150 bar) Flow: 8 gpm, (30 lpm) zero elevation 2 set couplings per 32.8' hose



* The HFD Oil Flow Divider is for use with other power sources, skid steer/mini excavator, it is not necessary with RHINO HPP power packs. The HFD is adjustable to accommodate 8 gpm, 10 gpm, and 12 gpm flow rates. The HFD protects the tool against overload. Never let the power source run with higher oil flow (number of revolutions) than necessary.



For installing Square Tube or Channel Post for Traffic Safety Signs, the add-on chucks, adapters and drive caps below can each be ordered separately to fit the size and type of post you are installing. Please contact a Rhino representative if you have any questions about these systems.

Square Tube Break-Away Anchor System*

PLEASE NOTE HPD 3 7/8" (98.4 mm) I.D. Master Chuck (801016) is also required with the following Break-Away Systems and will also require a chuck adapter and a drive cap.

Drives Square Anchors within 2 inches of ground level.
Will drive up to a 2 1/2" square anchor***

Adapter Part Number:

071014 Chuck Adapter for the Square Tube Break-Away Anchor System

Drive Cap Part Numbers for use with above adapter:

071004 1 1/4" Drive Cap for the Square Tube Break-Away
071005 1 1/2" Drive Cap for the Square Tube Break-Away
071006 1 3/4" Drive Cap for the Square Tube Break-Away
071007 2" Drive Cap for the Square Tube Break-Away
071008 2 1/4" Drive Cap for the Square Tube Break-Away
071009 2 1/2" Drive Cap for the Square Tube Break-Away

* HPD 60 Hydraulic Post Driver Sold Separately

**Anchor Drive Caps are sold by the outside dimension of the anchor.



Channel Post Break-Away Anchor System*

PLEASE NOTE HPD 3 7/8" (98.4 mm) I.D. Master Chuck (801016) is also required with the following Break-Away Systems and will also require a chuck adapter and a drive cap.

Drives Channel Post Anchors within 2 inches of ground level.
Will drive up to a 4 lb/ft Channel Post Anchor.

Adapter Part Number:

070832 Chuck Adapter for the Channel Post Break-Away Anchor System

Drive Cap Part Numbers for use with above adapter:

070836 Drive Cap for the Channel Post Break-Away Anchor System

This Adapter and Drive Cap is to be used for anchors only. The drive cap can present a safety hazard as the drive cap is not attached to the driver or adapter and can fall and cause injury.

* HPD 60 Hydraulic Post Driver Sold Separately



A Tradition of Quality and Service Since 1975

