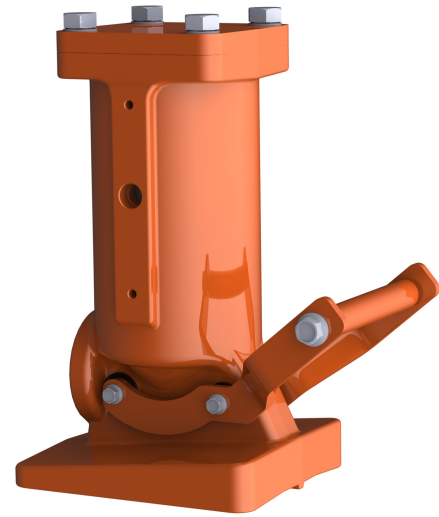


Martin® 3-inch Impacting Railcar Vibrator

This lightweight vibrator combines an impacting linear vibrator with a unibody/wedge. The [Martin® 3-inch Impacting Railcar Vibrator](#) provides up to 2024 lbs (918 kg) of force to unload stubborn materials.



BENEFITS

- Improves Efficiency**
 Linear vibrator provides powerful force to boost material flow.
- Small But Mighty**
 Compact vibrator and mount assembly provides plenty of power to unload stubborn materials.
- Gives Your Back a Break**
 Vibrator and wedge system weighs only 49 lb (22 kg), reducing risk of injury from manhandling large, unwieldy vibrators into railcar brackets.
- Easy to Handle**
 Lightweight vibrator with handle makes mounting/dismounting a “no-strain” procedure.
- Saves Your Energy**
 Air-efficient design operates on air supply from 40 to 80 psi (2.8 to 5.5 bar); consumes 30.5 cfm at 80 psi (425 L/min at 5.5 bar).
- Guaranteed Performance**
 Impacting Vibrator is covered by Martin Engineering’s *Absolutely, Positively, No Excuses Guarantee*.

NOTE

For extended life and optimum performance the air source should be filtered, regulated (80 psi max.) and lubricated (1 - 2 drops/min) within 25 feet of the vibrator.

ACCESSORIES

Description	Part Number
Female Wedge Bracket (LBF)	12735
Control Line Kit	39504
Air Motor Oil (qt)	14766

SPECIFICATIONS

Model	P/N	Piston	Air Pressure	CFM	VPM	Force	Weight
Martin® 3-inch Impacting Railcar Vibrator	AP5-300RC	3"	40 psi	16.2	2800	1224 lbs	49 lbs
			60 psi	20.8	3100	1500 lbs	
			80 psi	30.5	3600	2024 lbs	

Distributed By:



ChicagoVibratorProducts
Flow and Compaction
 Division of CVP Group
 800-842-7284 (P)
 866-247-7538 (F)
 Solutions@ChiVib.com
 www.ChicagoVibrator.com

**COMPANY WITH
 QUALITY SYSTEM
 CERTIFIED BY DNV GL
 = ISO 9001 =**