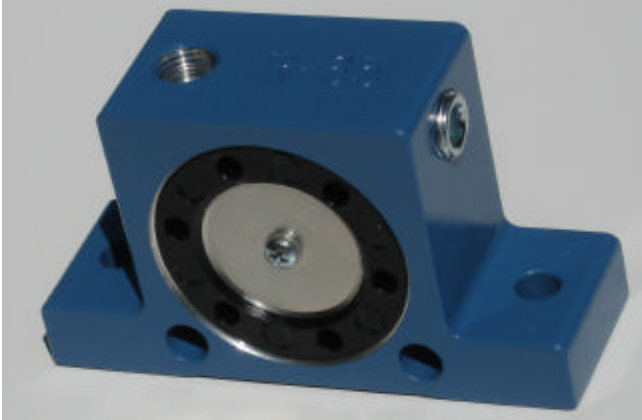


POWTEK

R HIGH AMPLITUDE ROLLER VIBRATOR



TYPICAL APPLICATIONS

Flow aid for bins and
hoppers of products with
larger particle size.

Dust collectors.
Concrete compaction
Bulk Bag compaction
Foundries

The **R-Roller Vibrator** is capable of delivering a very high amplitude (vibrator's up/down movement).

By utilizing an unbalanced roller, R-model is able to exceed the DAR vibrator with an amplitude that can be up to 20% higher. It does not use a muffler as it vents through the side plates.

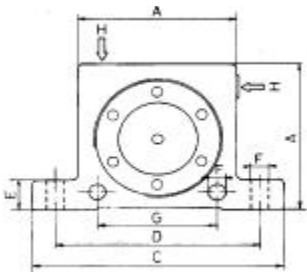
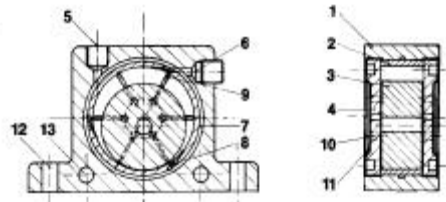
Air inlet can be mounted on the top (standard) or can be placed on the side to help in case of tight clearances.

The elliptical roller is retained by two special high impact plastic end plates. The housing is machined from an extruded aluminum section. It has 2 additional horizontal mounting holes to allow the mounting in alternative positions.

PERFORMANCE DATA

MODEL	FREQUENCY			CENTRIFUGAL FORCE			AIR CONSUMPTION		
	30 PSI(2 bars)	60 PSI(4 bars)	90 PSI(6 bars)	30 PSI(2 bars)	60 PSI(4 bars)	90 PSI(6 bars)	30 PSI(2 bars)	60 PSI(4 bars)	90 PSI(6 bars)
	vpm	vpm	vpm	lbs (kg)	lbs (kg)	lbs(kg)	cfm (l/min)	cfm (l/min)	cfm (l/min)
R-50	12000	16000	18000	250 (110)	650 (290)	950 (430)	3.5 (100)	5(150)	7(195)
R-65	9000	11000	13000	600 (270)	1000 (450)	1300 (590)	7 (200)	10(290)	14(400)
R-80	7000	9000	11000	700 (320)	1300 (590)	1600 (720)	10 (290)	15(430)	20(570)
R-100	5000	7000	8000	850 (380)	1500 (680)	2000 (900)	13 (370)	19(550)	25(730)
R-120	4000	6000	7000	1200 (540)	1800 (810)	2400 (1100)	17 (500)	25(700)	34(950)

- Extruded aluminum alloy body
- Hardened ground steel races
- Steel roller
- Plastic endplates
- Air inlet (BSP thread)
- Secondary air inlet
- Air channel
- Air supply nozzles
- Outlet openings
- Outlet diffuser
- Sound absorber plate
- Base mounting boltholes
- Side mounting boltholes



DIMENSIONS

MODEL		A	B (width)	C	D	E	F	G	H (BSP)	WEIGHT
R-50	inches	1.97	1.14	3.38	2.68	0.47	0.27	1.57	1/8	0.5 lbs
	mm	50	29	86	68	12	7	40		0.24 kg
R-65	inches	2.56	1.46	4.45	3.54	0.63	0.35	1.97	1/4	1.2 lbs
	mm	65	37	113	90	16	9	50		0.6 kg
R-80	inches	3.15	1.69	5.04	4.09	0.63	0.35	2.36	1/4	2.1 lbs
	mm	80	43	128	104	16	9	60		1 kg
R-100	inches	3.94	2.05	6.30	5.12	0.79	0.43	3.15	3/8	4.0 lbs
	mm	100	52	160	130	20	11	80		1.8 kg
R-120	inches	4.72	3.03	7.64	5.99	0.94	0.67	n.a.	3/8	10 lbs
	mm	120	77	194	152	24	17	-		4.3 kg