

Connecting our customers to the finest products since 1956

Railcar Vibrators

Authorized Dealers of



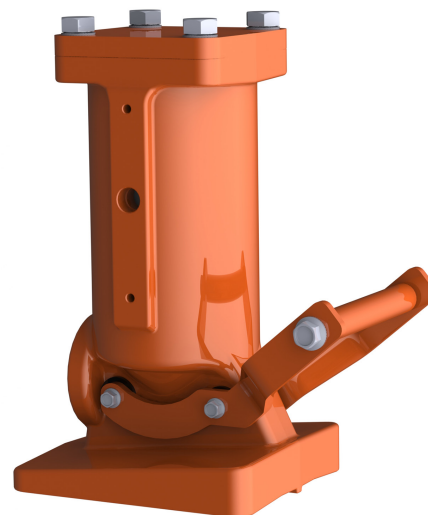
Website: www.ChicagoVibrator.com

Phone: [1-800-842-7284](tel:1-800-842-7284)



Martin® 3-inch Impacting Railcar Vibrator

This lightweight vibrator combines an impacting linear vibrator with a unibody/wedge. The Martin® 3-inch Impacting Railcar Vibrator provides up to 2024 lbs (918 kg) of force to unload stubborn materials.



BENEFITS

- Improves Efficiency**
 Linear vibrator provides powerful force to boost material flow.
- Small But Mighty**
 Compact vibrator and mount assembly provides plenty of power to unload stubborn materials.
- Gives Your Back a Break**
 Vibrator and wedge system weighs only 49 lb (22 kg), reducing risk of injury from manhandling large, unwieldy vibrators into railcar brackets.
- Easy to Handle**
 Lightweight vibrator with handle makes mounting/dismounting a "no-strain" procedure.
- Saves Your Energy**
 Air-efficient design operates on air supply from 40 to 80 psi (2.8 to 5.5 bar); consumes 30.5 cfm at 80 psi (425 L/min at 5.5 bar).
- Guaranteed Performance**
 Impacting Vibrator is covered by Martin Engineering's *Absolutely, Positively, No Excuses Guarantee*.

NOTE

For extended life and optimum performance the air source should be filtered, regulated (80 psi max.) and lubricated (1 - 2 drops/min) within 25 feet of the vibrator.

ACCESSORIES

Description	Part Number
Female Wedge Bracket (LBF)	12735
Control Line Kit	39504
Air Motor Oil (qt)	14766

SPECIFICATIONS

Model	P/N	Piston	Air Pressure	CFM	VPM	Force	Weight
Martin® 3-inch Impacting Railcar Vibrator	AP5-300RC	3"	40 psi	16.2	2800	1224 lbs	49 lbs
			60 psi	20.8	3100	1500 lbs	
			80 psi	30.5	3600	2024 lbs	

Proudly distributed by:




ChicagoVibratorProducts
Flow and Compaction



Phone: 1-800-842-7284
 Website: ChicagoVibrator.com
 Email: solutions@chivib.com

**COMPANY WITH
 QUALITY SYSTEM
 CERTIFIED BY DNV GL
 = ISO 9001 =**

Martin® 4-inch Impacting Railcar Vibrator

The **Martin® 4-inch Impacting Railcar Vibrator** provides up to 2200 lbs (998 kg) of force to unload stubborn materials.

BENEFITS

- **Improves Efficiency**
Linear vibrator provides powerful force to boost material flow.
- **Small But Mighty**
Compact vibrator and mount assembly provides plenty of power to unload stubborn materials.
- **Unique Handle**
Unique handle provides operators several grip options.
- **Guaranteed Performance**
Impacting Vibrator is covered by Martin Engineering's *Absolutely, Positively, No Excuses Guarantee*.

NOTE

For extended life and optimum performance the air source should be filtered, regulated (80 psi max.) and lubricated (1 - 2 drops/min) within 25 feet of the vibrator.



ACCESSORIES

Description	Part Number
Female Wedge Bracket (LBF)	12735
Control Line Kit	39504
Air Motor Oil (qt)	14766
Martin® Railcar Vibrator Storage Stand & Cart	RV10016P

SPECIFICATIONS

Model	P/N	Piston	Air Pressure	CFM	VPM	Force	Weight
Martin® 4-inch Impacting Railcar Vibrator	AP5-400RC	4"	40 psi	22	1500	1330 lbs	81 lbs
			60 psi	25	1750	2010 lbs	
			80 psi	42	1900	2200 lbs	

Proudly distributed by:




ChicagoVibratorProducts
Flow and Compaction



Phone: 1-800-842-7284
 Website: ChicagoVibrator.com
 Email: solutions@chivib.com

**COMPANY WITH
 QUALITY SYSTEM
 CERTIFIED BY DNV
 ISO 9001**