

SST Turbine Vibrator Performance

PERFORMANCE DATA FOR SILVER SONIC TURBINE VIBRATORS																						
VIBRATOR MODEL	UNBALANCE		AIR PRESSURE																			
			20 PSI (1.4 BAR)					40 PSI (2.8 BAR)					60 PSI (4.1 BAR)					80 PSI (5.5 BAR)				
			SPEED		FLOW		FORCE	SPEED		FLOW		FORCE	SPEED		FLOW		FORCE	SPEED		FLOW		FORCE
	LB-IN	KG-MM	RPM	CFM	LPM	LBS	N	RPM	CFM	LPM	LBS	N	RPM	CFM	LPM	LBS	N	RPM	CFM	LPM	LBS	N
SST-12	0.006	0.69	24,500	< 1.0	29	102	454	32,000	1.4	40	174	773	36,000	1.8	51	220	979	40,000	2.1	59	272	1210
SST-16	0.017	1.96	18,100	1.3	36	160	712	23,550	1.6	46	270	1201	27,230	1.9	54	360	1601	30,000	2.2	62	440	1960
SST-25	0.098	11.29	12,200	5.4	96	415	1846	15,100	5.0	144	630	2802	17,600	8.5	240	860	3825	19,000	11.5	324	1000	4450
SST-35	0.273	31.45	7,500	6.8	193	436	1940	10,900	10.0	283	921	4098	13,000	15.0	425	1310	5828	15,500	20.0	566	1863	8286

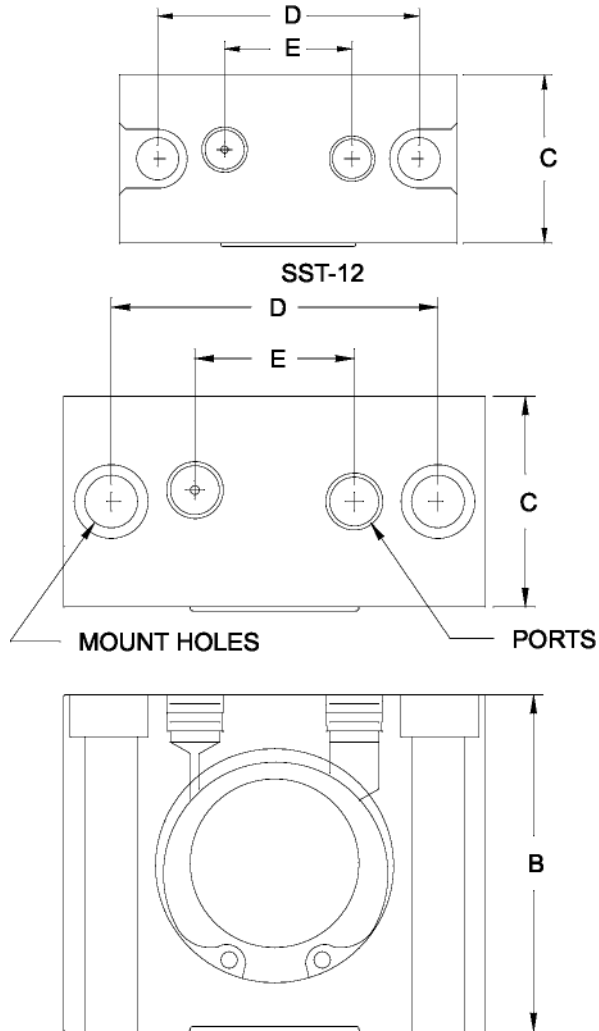
5 PSI (.34 BAR) required for start-up.

All turbine vibrators ship complete with muffler and fasteners.

Dimensions:

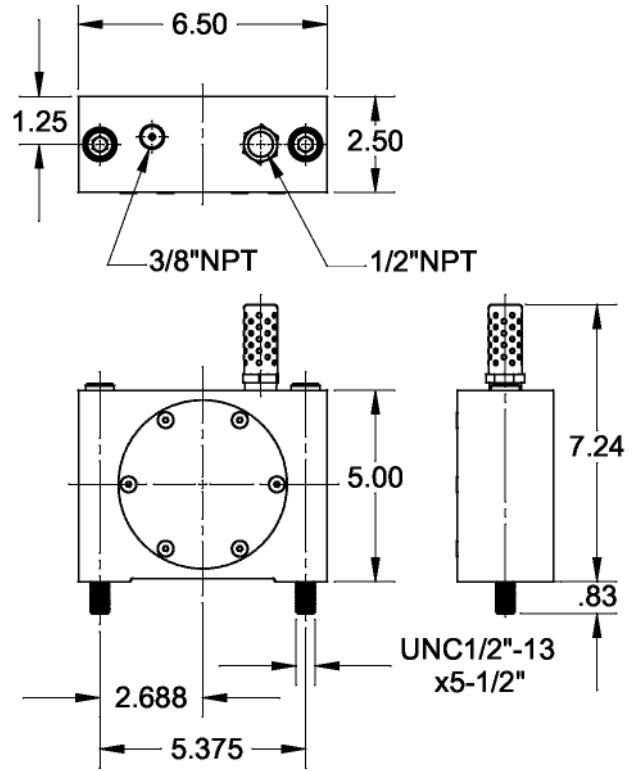
VIBRATOR	A	B	C	D	E	MOUNT HOLE DIA.	PORT DIA.	WEIGHT
SST-12	2.50 (64)	2.00 (51)	1.25 (32)	1.938 (49)	.944 (24)	5/16" (8)	1/8 NPT	0.7 (0.3)
SST-16	3.25 (83)	2.50 (64)	1.62 (41)	2.563 (65)	1.228 (31)	7/16" (11)	1/4 NPT	1.5 (0.7)
SST-25	5.00 (127)	4.00 (102)	2.50 (64)	3.875 (98)	1.890 (48)	5/8" (16)	3/8 NPT	5.3 (2.4)
SST-35	6.50 (165)	5.00 (127)	2.50 (64)	5.375 (137)		9/16" (15)	3/8 NPT 1/2 NPT	8.6 (3.9)

SST-12, SST-16, & SST-25



A
SST-16 & SST-25

SST-35



ChicagoVibratorProducts
Flow and Compaction

1-800-842-7284
 1-630-920-9411 Outside US & Canada
www.chicagovibrator.com