



BALL VIBRATOR PERFORMANCE DATA

VIBRATOR MODEL	AIR PRESSURE																		
	UN	START MIN		20 PSI (1.4 BAR)				40 PSI (2.8 BAR)				60 PSI (4.1 BAR)				80 PSI (5.5 BAR)			
	BALANCE	VER	HOR	SPEED	FLOW	FORCE	Efficiency	SPEED	FLOW	FORCE	Efficiency	SPEED	FLOW	FORCE	Efficiency	SPEED	FLOW	FORCE	Efficiency
	LB-IN	PSI	PSI	RPM	CFM	LBS	LBS/CFM	RPM	CFM	LBS	LBS/CFM	RPM	CFM	LBS	LBS/CFM	RPM	CFM	LBS	LBS/CFM
KG-MM	BAR	BAR	---	LPS	N	N/LPS	---	LPS	N	N/LPS	---	LPS	N	N/LPS	---	LPS	N	N/LPS	
Single Bolt Side Ports																			
BS-10	0.003	5	2	16000	4.3	25	6	20000	7	38	5	22000	9	45	5	22800	10.8	50	5
	0.039	0.3	0.1	---	2	111	55	---	3.3	169	51	---	4.2	200	47	---	5.1	223	44
BS-16	0.02	15	7	9400	4.1	50	12	13000	6.4	93	15	14000	8.2	110	13	14800	10	124	12
	0.23	1	0.5	---	1.9	222	115	---	3	414	137	---	3.9	489	126	---	4.7	553	117
BS-19	0.043	20	10	8600	5.5	89	16	11000	8.4	150	18	13000	11	200	18	14800	13.7	267	20
	0.5	1.4	0.7	---	2.6	396	153	---	4	667	168	---	5.2	890	171	---	6.5	1,190	184
BS-25	0.12	30	15	5700	7.5	110	15	6900	12	160	13	8200	16	230	14	9600	19.8	314	16
	1.4	2.1	1	---	3.5	489	138	---	5.7	712	126	---	7.6	1,023	135	---	9.3	1,397	150
Two Bolt Top Ports																			
US-13	0.009	5	2	13000	6.5	45	7	18000	11	84	8	20000	15	110	7	22400	19	133	7
	0.11	0.3	0.1	---	3.1	200	65	---	5.2	374	72	---	7.1	489	69	---	9	589	66
US-19	0.043	20	10	8700	5.5	92	17	11000	8.4	160	19	13000	12	210	18	15000	16	275	17
	0.5	1.4	0.7	---	2.6	409	158	---	4	712	180	---	5.7	934	165	---	7.6	1,222	162
US-25	0.12	30	15	6300	7	140	20	8400	12	240	20	9100	16	280	18	9600	20	314	16
	1.4	2.1	1	---	3.3	623	189	---	5.7	1,068	189	---	7.6	1,246	165	---	9.4	1,397	148
US-38	0.52	50	25	4300	12	270	23	5600	19	470	25	6000	25	540	22	6200	31	568	18
	6	3.4	1.7	---	5.7	1,201	212	---	9	2,091	233	---	11.8	2,402	204	---	14.6	2,525	173
US-44	0.97	60	25	3500	17	330	19	4300	27	520	19	4700	35	600	17	5000	42.5	689	16
	11	4.1	1.7	---	8	1,468	183	---	12.7	2,313	182	---	16.5	2,669	162	---	20.1	3,063	153
Two Bolt Side Ports																			
CS-19	0.043	20	10	9100	5.7	100	18	12000	8.4	170	20	14000	12	220	18	17000	15.7	353	22
	0.5	1.4	0.7	---	2.7	445	165	---	4	756	191	---	5.7	979	173	---	7.4	1,570	212
CS-25	0.12	30	15	6300	7.8	130	17	8100	13	220	17	9200	18	290	16	10000	22.3	341	15
	1.4	2.1	1	---	3.7	578	157	---	6.1	979	160	---	8.5	1,290	152	---	10.5	1,516	144
CS-35	0.24	50	25	5300	7.8	190	24	6700	13	310	24	7600	16	390	24	8100	19	447	24
	2.8	3.4	1.7	---	3.7	845	230	---	6.1	1,379	225	---	7.6	1,735	230	---	9	1,989	222
Four Bolt Side Ports																			
DS-41	0.82	55	25	3200	13	240	18	4000	21	370	18	4400	27	450	17	4700	33.7	514	15
	9.4	3.8	1.7	---	6.1	1,068	174	---	9.9	1,646	166	---	12.7	2,002	157	---	15.9	2,288	144
DS-51	1.3	60	30	3100	13	350	27	4000	20	580	29	4300	27	680	25	4400	33.7	715	21
	15	4.1	2.1	---	6.1	1,557	254	---	9.4	2,580	273	---	12.7	3,025	237	---	15.9	3,179	200

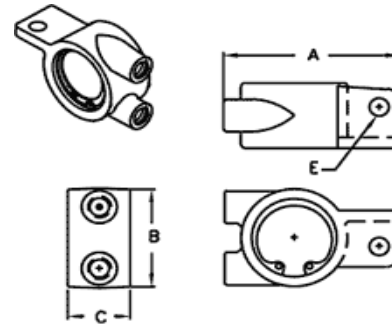
CHICAGO VIBRATOR PRODUCTS

1-630-920-9411

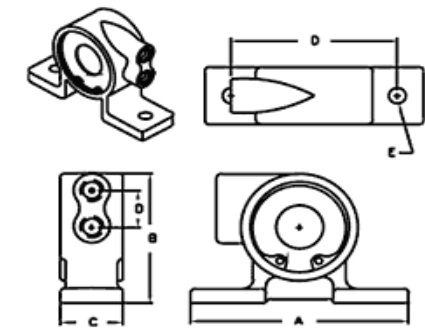
WESTMONT, IL 60559

DIMENSIONAL DATA

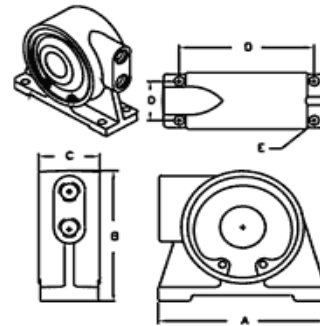
VIBRATOR MODEL	WEIGHT	A	B	C	D	E	INLET PORT
		LENGTH	HEIGHT	WIDTH	BOLT CENTERS	BOLT HOLE	
	LBS	IN	IN	IN	IN	IN	IN
	KG	MM	MM	MM	MM	MM	---
BS-10	0.7	3.1	1.9	1.1	Single Bolt	0.34	1/8 NPT
	0.32	79	48	28	---	9	---
BS-16	1.4	4	2.5	1.3	Single Bolt	0.41	1/4 NPT
	0.64	102	64	33	---	10	---
BS-19	1.9	4.5	2.8	1.5	Single Bolt	0.41	1/4 NPT
	0.86	114	71	38	---	10	---
BS-25	3.1	5.2	3.2	1.8	Single Bolt	0.53	1/4 NPT
	1.41	132	81	46	---	13	---
US-13	1.2	5.2	2.7	1.2	4	0.41	1/8 NPT
	0.54	132	69	30	102	10	---
US-19	2.2	5.1	3.4	1.5	4	0.41	1/4 NPT
	1	130	86	38	102	10	---
US-25	3.5	6.6	3.9	1.8	5	0.53	1/4 NPT
	1.59	168	99	46	127	13	---
US-38	7.6	7.9	5.4	2.3	6	0.69	3/8 NPT
	3.45	201	137	58	152	18	---
US-44	10.2	8.9	5.8	2.6	7	0.69	1/2 NPT
	4.63	226	147	66	178	18	---
CS-19	2.4	5.3	3.4	1.5	4	0.41	1/4 NPT
	1.09	135	86	38	102	10	---
CS-25	4.3	5.4	4.4	2.1	4	0.53	1/4 NPT
	1.95	137	112	53	102	13	---
CS-35	4.6	5.4	4.4	2.1	4	0.53	1/4 NPT
	2.09	137	112	53	102	13	---
DS-41	10.4	6.8	5.7	2.5	5.50 X 1.80	0.41	1/2 NPT
	4.72	173	145	64	140 X 45	10	---
DS-51	10.8	6.8	5.7	2.5	5.50 X 1.80	0.41	1/2 NPT
	4.9	173	145	64	140 X 45	10	---



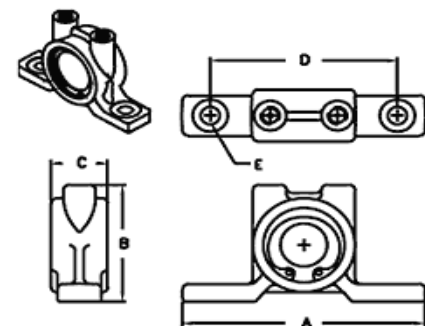
BS Models



CS Models



DS Models



US Models

CHICAGO VIBRATOR PRODUCTS

1-630-920-9411

WESTMONT, IL 60559